

# Tiger N-Type 66TR 415 Watt

## MONO-FACIAL MODULE

### N-Type

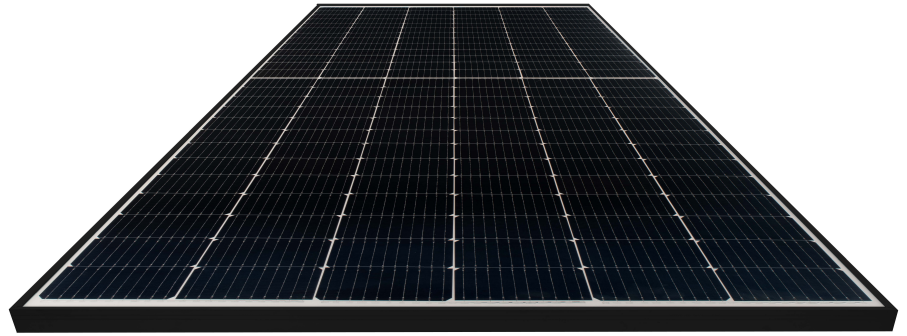
IEC61215(2016), IEC61730(2016)

ISO9001:2015: Quality Management System

ISO14001:2015: Environment Management System

ISO45001:2018

Occupational health and safety management  
(Made in China/Malaysia/Vietnam/U.S)



## Key Features



### Multi Busbar Technology

Better light trapping and current collection to improve module power output and reliability.



### PID Resistance

Excellent Anti-PID performance guarantee via optimized mass-production process and materials control.



### Durability Against Extreme Environmental Conditions

High salt mist and ammonia resistance.



### Hot 2.0 Technology

The N-type module with Hot 2.0 technology has better reliability and lower LID/LETID.



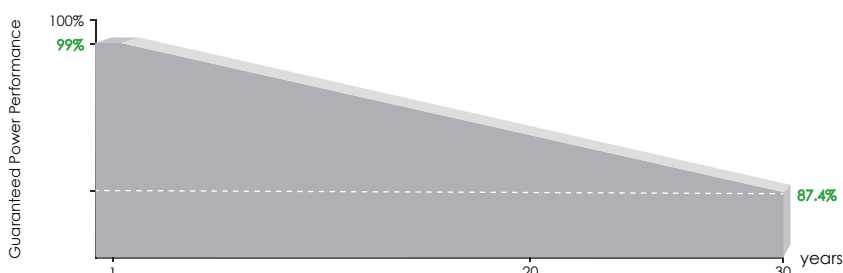
### Enhanced Mechanical Load

Certified to withstand: wind load (2400 Pascal) and snow load (5400 Pascal).



POSITIVE QUALITY™  
Continuous Quality Assurance

## LINEAR PERFORMANCE WARRANTY



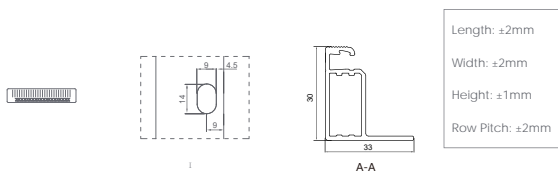
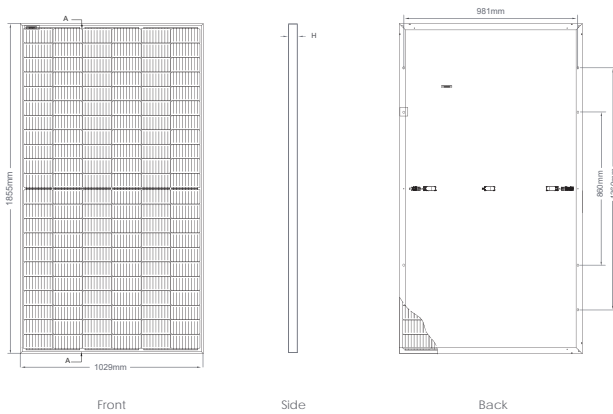
**25** Year Product Warranty \*

**30** Year Linear Power Warranty

**0.4%** Annual Degradation Over 30 years

\* The product warranty is only applicable in Australia.

## Engineering Drawings



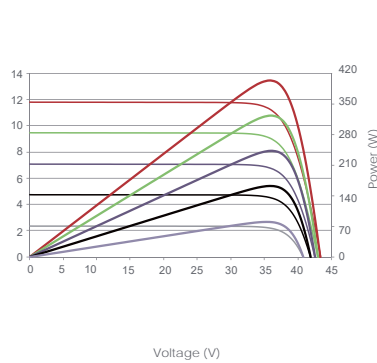
## Packaging Configuration

(Two pallets = One stack)

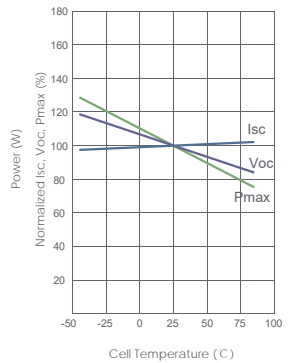
35pcs/pallets, 70pcs/stack, 840pcs/40'HQ Container

## Electrical Performance & Temperature Dependence

Current-Voltage & Power-Voltage Curves (400W)



Temperature Dependence of Isc, Voc, Pmax



## Mechanical Characteristics

Cell Type	N type Mono-crystalline
No. of cells	132 (2×66)
Dimensions	1855×1029×30mm (73.03×40.51×1.18 inch)
Weight	20.8kg (45.86 lbs)
Front Glass	3.2mm, Anti-Reflection Coating, High Transmission, Low Iron, Tempered Glass
Frame	Anodized Aluminium Alloy
Junction Box	IP68 Rated
Output Cables	TUV 1×4.0mm <sup>2</sup> (+): 290mm, (-): 145mm or Customized Length
Connector Type	JK03M/1B or Genuine MC4
Fire Class	Class C

## SPECIFICATIONS

Module Type	JKM415N-6RL3 JKM415N-6RL3-V
	STC NOCT
Maximum Power (Pmax)	415Wp 309Wp
Maximum Power Voltage (Vmp)	36.79V 33.89V
Maximum Power Current (Imp)	11.28A 9.13A
Open-circuit Voltage (Voc)	46.77V 44.14V
Short-circuit Current (Isc)	12.06A 9.74A
Module Efficiency STC (%)	21.74%
Operating Temperature(°C)	-40 C ~ +85 C
Maximum System Voltage	1000/1500VDC (IEC)
Maximum Series Fuse Rating	20A
Power Measurement Tolerance	±3%
Temperature Coefficients of Pmax	-0.34%/C
Temperature Coefficients of Voc	-0.28%/C
Temperature Coefficients of Isc	0.048%/C
Nominal Operating Cell Temperature (NOCT)	45±2 C

\*STC: Irradiance 1000W/m<sup>2</sup> Cell Temperature 25°C

AM=1.5

NOCT: Irradiance 800W/m<sup>2</sup> Ambient Temperature 20°C

AM=1.5

Wind Speed 1m/s