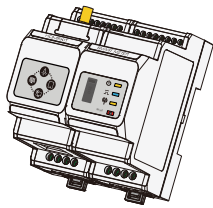


# HK3000

## Quick Installation Instruction



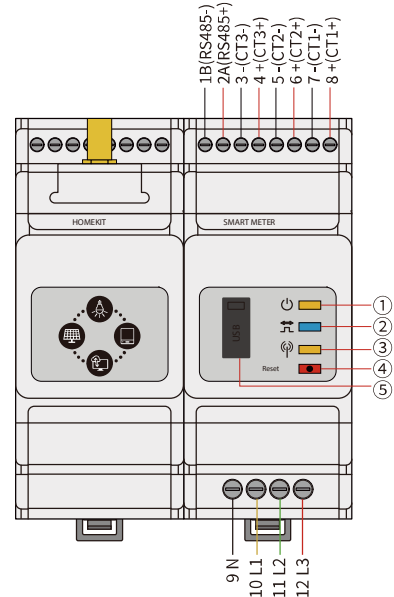
Ver 1.0  
2021-04-06

### 01 Packing List

- 1 x HomeKit 3000 (HK3000)
- 1 x Screwdriver
- 1 x Quick Installation Instruction
- 1 x WiFi Antenna
- 4 x Wiring Terminal
- 3 x Current Transformer (120A/40mA or 200A/66.7-mA CT)
- 1 x USB Seal

### 03 Product Overview

HK3000 is designed as a three-phase meter with three-channel CTs to measure energy power at the grid point. Together with the measurement of inverter output, you can calculate the household load. Meanwhile, HK 3000 can upload the data to the cloud server in real time to conduct the measurement, statistics analysis and management of electric energy at different loads. The data cannot be taken as the basis and standard for electric charging by the grid power company.



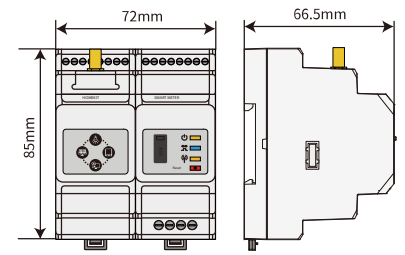
### 02 Technical Data

Model	HK3000	
Application	Household Loads Monitoring + ARCB	
Voltage	Rated Voltage	3*230V/400V
	Voltage Range	AC 100V~240V
	Frequency	50Hz/60Hz
Current Input Range	0.04A~200A	
Self-Consumption	< 5W	
Communication	100M Ethernet	
	WiFi	
Interface	3 LEDs (Power, Energy Consumption, Communication), Reset Button	
Operating Temperature	-25 ~ +60°C	
Storage Temperature	-30 ~ +70°C	
Operating Humidity	< 95%; No Condensation	
Altitude	< 2000m	

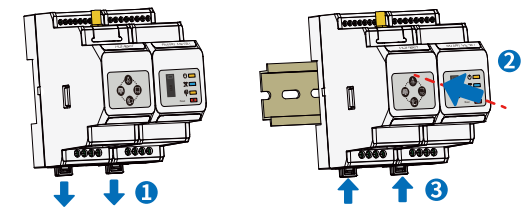
### 04 Equipment Installation

- NOTE**
- HK3000 should be installed on a rail and should not be installed outdoors.
  - When operating the meter, use insulation tools and wear personal protective equipment to ensure personal safety.

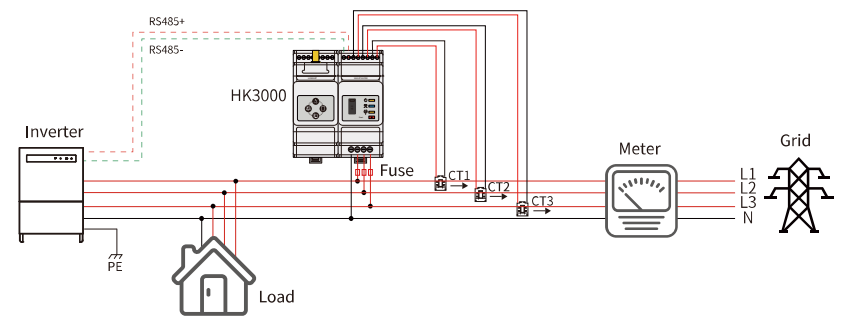
#### Dimensions



#### Installation



### 05 Cable Connections



### 06 APP Configuration

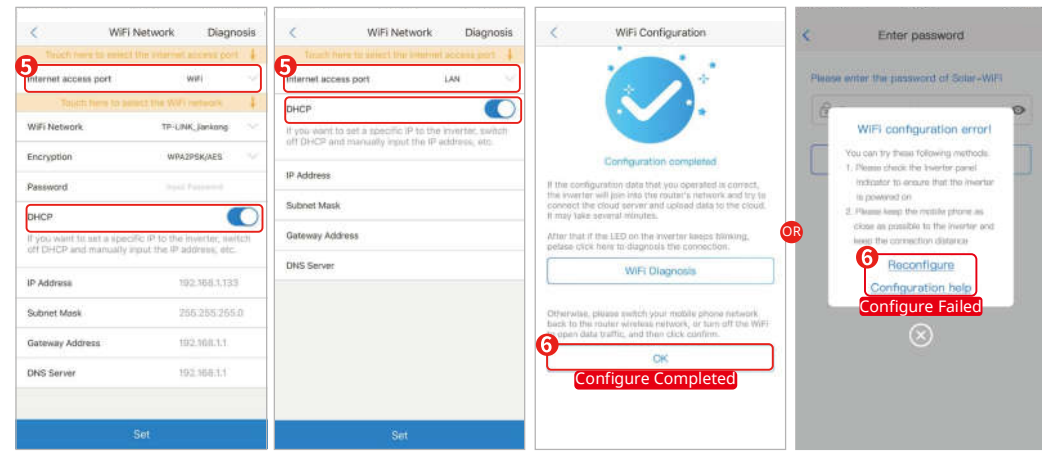
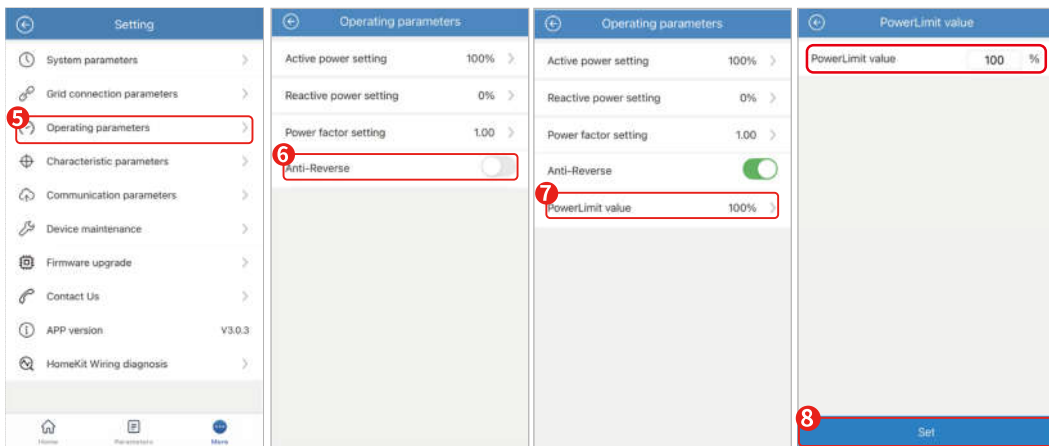
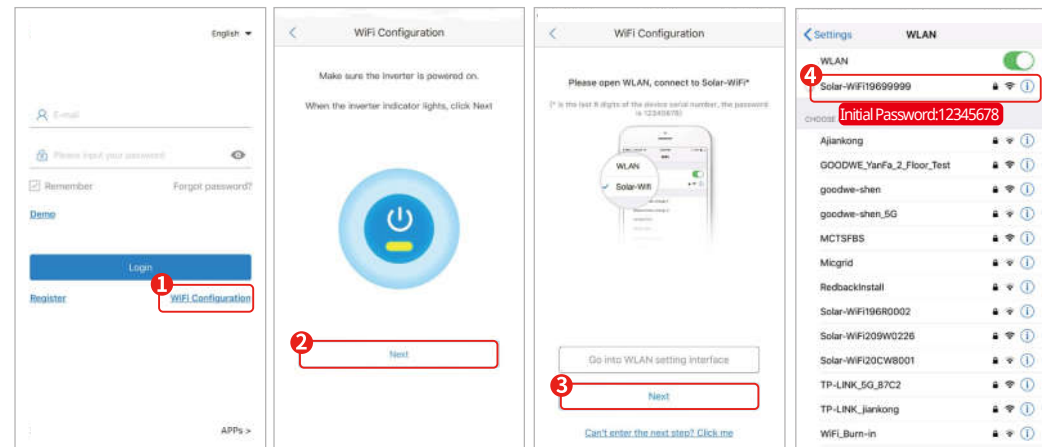
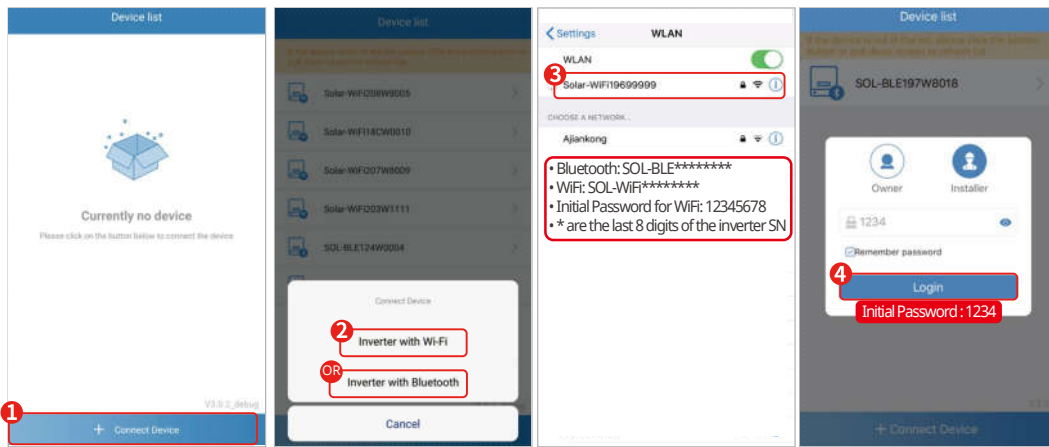
#### HK3000 Configuration via SolarGo APP

- NOTE**
- Search in Google Play/App Store or scan the QR code to download SolarGo APP.
  - Make sure the inverter is grid-tied.
  - Establish communication between the inverter and SolarGo app via bluetooth module or WiFi module, and ensure that the communication between them is normal.



SolarGo APP

NO.	Part	Description
1	Power LED	Normal status: ON
2	Energy consumption LED	Consuming: ON Generating: Blinking
3	Communication LED	Blink once: detecting data transferring Blink 5 times: Reset successfully
4	Reset button	Press less than 3s: Meter Reset Press 5s more or less: Meter Settings Initialization Press more than 10s: Meter Initialize settings and Clear Energy Data
5	USB port	For after-sales maintenance.



Select WiFi or LAN as Internet Access Port. Switch off DHCP and manually input the IP address if you want to set a specific static IP.

## HK3000 Network Configuratin and Monitoring via SEMS Portal

### NOTE

- Scan the QR code to download SEMS Portal APP.
- Connect HK3000 to the Ethernet properly via SEMS Portal.
- Log in using the initial password for the first time and change the password as soon as possible. To ensure the account security, you are advised to change the password periodically and keep the new password in mind.



SEMS Portal APP

