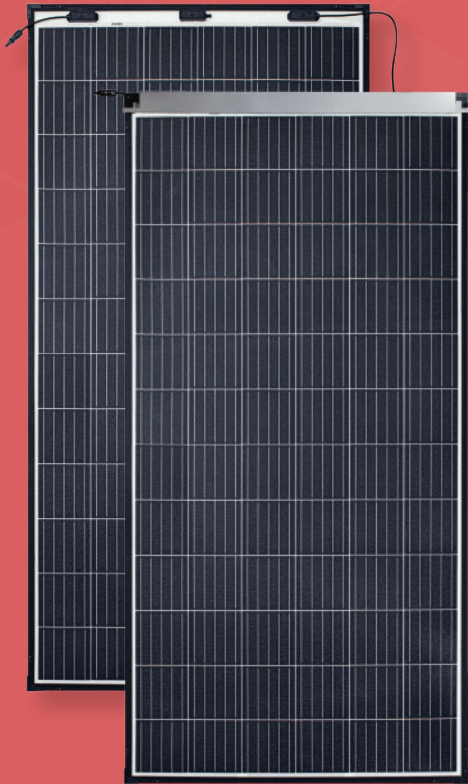


eArc

SMD375M-6X12UW

375 Watt

72 Cell Monocrystalline Module



Ultra-light: Glass free module weighs 6.9 kg, 70% lighter than conventional glass modules.



Fast-Installation: Through "Quick-Bonding" installation, eArc requires no penetration, reduces time on roof by 40% and eliminates the use of mounting hardware.



Aesthetic: Seamless integration with underlying installation surface.



Durable: eArc is the first glassless module to pass the same durability tests as conventional glass modules, including IEC 61215:2016 and IEC61730:2016

POWER OUTPUT RANGE 370~375 W

POWER TOLERANCE 0-5 W

MADE IN CHINA

LINEAR PERFORMANCE WARRANTY

10 Year Product Warranty

25 Year Linear Power Warranty



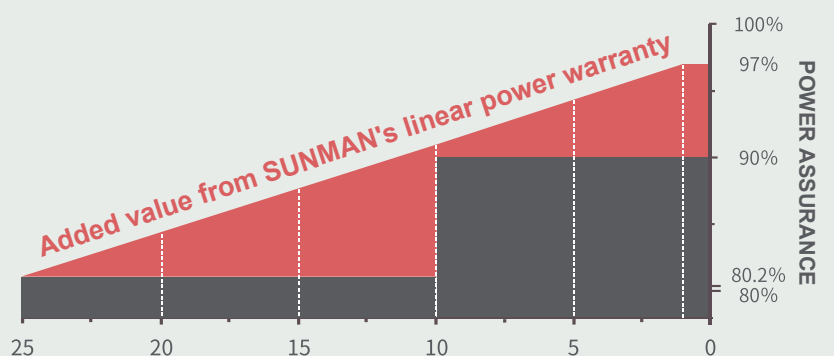
www.sunman-energy.com



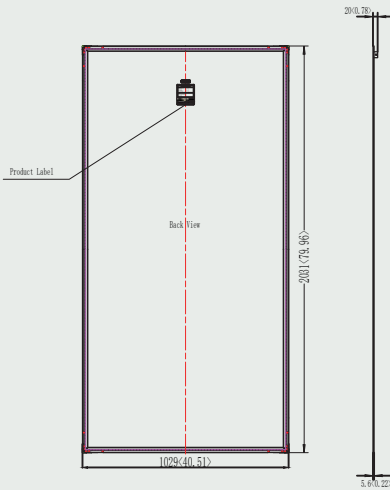
ULTRA-LIGHT & FLEXIBLE SOLAR PANEL

CAUTION: Read installation manual before using the product.

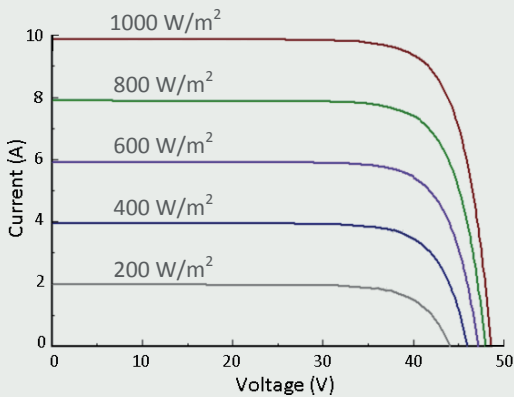
©2020 Sunman (zhenjiang) Co., Ltd. All rights reserved. Specifications included in this datasheet are subject to change without notice.



DIMENSIONS



I-V CURVE (375)



TEMPERATURE CHARACTERISTICS

Nominal Module Operating Temperature(NOMT)	41±2 °C
Temperature Coefficient of P_{max}	-0.38 %/°C
Temperature Coefficient of V_{oc}	-0.28 %/°C
Temperature Coefficient of I_{sc}	0.020 %/°C

Fire resistance:
C in accordance with UL 790

SMD Series has been certified to install on color-bond steel roof sheeting and Zincalume. Any other roof sheeting install requires consultation with Sunman or its local importer

Installation of SMD series requires sika™Sikasil SG 20 Silicone Adhesive.

SMDUW/IEC AU 2020B

ELECTRICAL CHARACTERISTICS

STC	SMD375M-6X12UW	SMD370M-6X12UW
Maximum Power (P_{max})	375	370
Maximum Power Voltage (V_{mp})	40.2	39.9
Maximum Power Current (I_{mp})	9.33	9.28
Open-circuit Voltage (V_{oc})	48.6	48.4
Short-circuit Current (I_{sc})	9.86	9.81
Module Efficiency (%)	17.9	17.7
Operating Temperature	-40 °C to 85 °C	
Maximum System Voltage	1000 V DC (IEC)	
Maximum Series Fuse Rating	20 A	
Application Class	Class A	
Power Tolerance	0/+5 W	

STC: Irradiance 1000W/m², Cell temperature 25°C, AM=1.5. Tolerances of P_{max} , V_{oc} and I_{sc} are within ±5%

NMOT	SMD375M-6X12UW	SMD370M-6X12UW
Maximum Power (P_{max})	282	278
Maximum Power Voltage (V_{mp})	37.0	36.8
Maximum Power Current (I_{mp})	7.63	7.56
Open-circuit Voltage (V_{oc})	45.3	45.1
Short-circuit Current (I_{sc})	8.07	8.00

NMOT: Irradiance 800W/m², Ambient temperature 20°C, AM=1.5, Wind speed 1 m/s.

MECHANICAL CHARACTERISTICS

Solar Cell	Monocrystalline silicon (158.75mm)
No. of Cells	72 (6×12)
Module Dimensions	2031×1029×5.6 mm
Weight	6.9kg
Backsheet	White
Frame	Black Anodized Aluminium Alloy
J-box	IP 68 rated
Output Cables	Photovoltaic technology cable 4.0 mm 2, (+)150 / (-)450 mm
Connector	Dawning: C1 

PACKAGING CONFIGURATION

	20' GP	40' HC
Module per pallet	30+50	50
Pieces per container	400	1000