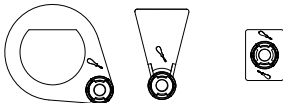


Energy Advisor Instructions

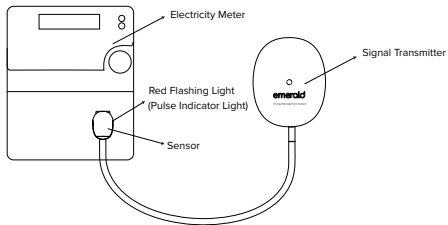
Pack includes:

1. Energy Advisor: signal transmitter and sensor
2. 3 mounting brackets
3. Alcohol wipe
4. Cable-tie
5. Metal magnetic bracket
6. 3M tape

Mounting brackets



Installation



Installing The Energy Advisor

1. Locate the red flashing light on the front of your electricity meter which flashes when you use power.

IMPORTANT: Your meter may have more than one red light. To correctly identify the red light that measures your energy usage, turn on a high-use appliance like a heater or electric oven and identify which red light increases in flash rate.

NOTE: If you have solar your red light will not flash during the day when you are not using power from the grid - turn your solar off and you will notice the red light start to flash.

2. Record the number on the meter which explains how many times your meter flashes for each kWh of energy your home uses. This number is usually located on the front of your electricity meter close to the red light. You will need this number later after installing the emerald EMS app.

EXAMPLE: If your electricity meter is labelled: "1Wh/imp" or "1kWh/imp" your flash rate is 1.

3. Clean meter using the alcohol wipe. Allow the area to completely dry. Select the most appropriate mounting bracket so the sensor will be directly over the red light. In most cases this will be the square bracket.

TIP: If you have on iCredit meter you will need to place the circular ring mount bracket around the lip next to your red light.

4. Remove the backing tape and place the mount over the flashing red light. Press for 30secs to allow the tape to stick.

IMPORTANT: Ensuring the red light is visible through the small hole in the mounting bracket.

5. Attach the sensor to the mounting bracket and turn the Energy Advisor on by pressing the power button & hold > 1sec.

6. Use the magnetic feet to place the Energy Advisor on the side of the meter box.

NOTE: If your meter box is not magnetic, please install the metal magnetic bracket to your meter box using the 3M tape.

IMPORTANT: To ensure a strong Bluetooth signal, your signal transmitter must be placed outside of the meter cabinet (not inside). It is safe to leave outside and exposed to the elements.

Install emerald EMS app



Visit your app store to download the free emerald EMS app or scan the **QR code**.

IOS: requires IOS 9 .0 or later Android: requires Android 4.4 or later. Devices must support Bluetooth 4.0.

Warning

- Take care when working near your electricity meter box.
- Do not touch any wires or exposed terminals.
- Do not modify any electrical equipment.



Technical Specifications

Power supply	Pre-installed non-replaceable battery
Wireless mode	Bluetooth 5.0
Operating frequencies	2.4GHz
Operating temperature	-10~45°C
Signal transmitter dimensions	70x57x29mm
Sensor dimensions	30x22x17.3mm
Range	Indoor: 25m - Outdoor: 80m
IP	IP65