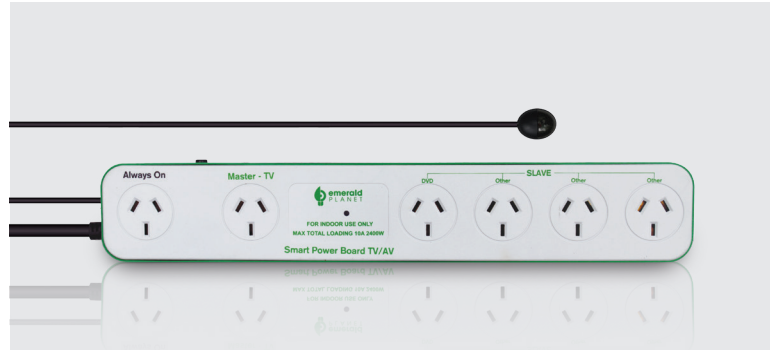




## DIMMERS

### FEATURES

- Trailing edge dimmer specifically designed for LEDs
- Smooth dimming across a wide dimming range
- Compatible with all Emerald Planet LED lights
- Rated for 400VA load
- Must be installed by a licensed electrician.



## STANDBY POWER CONTROLLERS

### FEATURES

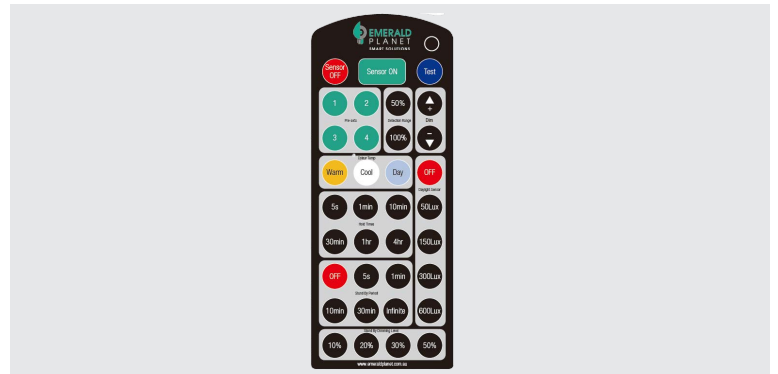
- Standby power saver
- 6 socket outlets:
  - 1 x master socket
  - 4 x slave sockets
  - 1 x always on power socket
- 1 hour automatic shutdown
- Surge/overload protection.



## SONAR SENOR

### FEATURES

- This optional plug and play motion and daylight sensor offers additional energy-savings, is easily installed (no wiring required) and conveniently controlled from the ground via the Emerald Planet Universal Remote Control.



## UNIVERSAL REMOTE CONTROL

### FEATURES

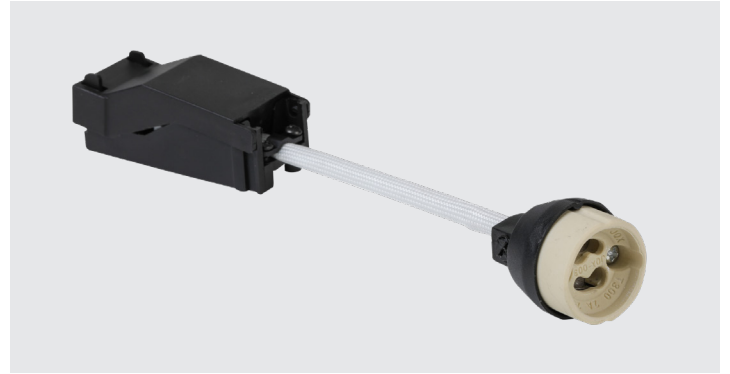
- Control your lighting from the ground
- Suitable across a range of Emerald Planet lighting products
- 4 pre-set programs
- Compatible with the LED Sonar High Bay, 15W LED Uni Batten and 17W LED Vanguard Panel.



## FAN SEAL

### FEATURES

- Can be installed from inside the house  
- no ceiling access required.



## GU10 CONNECTOR

### FEATURES

- This double insulated GU10 connector with twin 240V access points is suited for use with Emerald Planet's GU10 Spotlight bulbs.
- Available with optional flex and plug.





## SURFACE MOUNTING FRAME

To fit 1192x292mm and 595x595mm size Emerald Planet panels.



## RECESSED MOUNTING FRAME

To fit 1192x292mm and 595x595mm size Emerald Planet panels in 1225x325mm and 625x625mm cut-outs.

### SPECIFICATIONS

| MODEL NUMBER | DIMENSIONS |
|--------------|------------|
| EP-PF123     | 1210x310mm |
| EP-PF63      | 610x310mm  |
| EP-PF66      | 613x613mm  |

### SPECIFICATIONS

| MODEL NUMBER | DIMENSIONS |
|--------------|------------|
| EP-RPF123    | 1270x370mm |
| EP-RPF63     | 670x370mm  |
| EP-RPF66     | 673x673mm  |



## FIREBIRD EXPANSION PLATE

### FEATURES

- Suited for Emerald Planet Firebird Emergency Exit Signs to expand the faceplate and cover larger holes.
- 328mm cut-out, 495mm faceplate.



## FIREFLY SURFACE MOUNT KIT

### FEATURES

- Suited for Emerald Planet Firefly Series Emergency Light.
- Can be surface mounted or suspended
- 70mm cut-out/lighting standard.